



HARVEY KALLES

R E A L E S T A T E L I M I T E D



Presents

 Teutonic Splendour and Water Phantasie - Ganaraska 



A Christie Great Estate Featured Property

Richard's Notes

Professor Zacharias, a luminary in the field of Economics, an illustrious author and teacher at the Goettingen University, visits our Ganaraska Forest three to four times a year to pen his books. In 1995, he bought the Estate from a Persian Engineering who studied in Germany and originally plunked down some \$4.2 million to build his Canadian Escape on the sprawling forested 6 acres. In 2000, the Professor seized on the opportunity to acquire an additional abutting 6 acres to ensure a perpetual buffering zone - thus ~ 12 acres in total. For the occasional visiting friends and family, the self contained West Wing Guest Quarter - complete with Kitchen, Washroom and Laundry Facility, offers complete privacy from the main house. All principal rooms overlook the Pond/Lake and lush green forests.

With only 50 minutes highway driving North West of Toronto, the Estate is ideal for the occasional escape or easy commute from Peterborough, Northumberland, and of course, Toronto itself.



CHRISTIE'S
GREAT ESTATES





CREAK BARKS

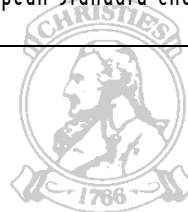




1700
CHRISTIE'S

GREAT ESTATES

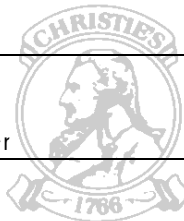
<p>Foyer</p> <p>Airlock</p> <p>Ground Level Podium</p>	<p>8' 7¼" x 13' 11"</p>	<ul style="list-style-type: none"> ■ 13' 7" Ceilings ■ Ceramic Floors ■ Decorative Cast Iron / Glass Painted Double Doors ■ Glass Transom ■ 2 x Alcoves ■ 18' 10" Ceilings ■ Italian Glass Chandelier ■ Oversized European Standard Cherry Wood Doors ■ Brass Hardware ■ Cherry Wood Baseboard ■ 4 x Pot Lights ■ Spiral Staircase w/ Cherry Wood Railings
<p>Lower Level</p>		
<p>Kitchen</p>	<p>39' x 25'</p>	<ul style="list-style-type: none"> ■ Heated Ceramic Floors ■ Wraparound Windows from Germany ■ Polished Granite Counter Tops ■ 5 x Recessed Pot Lights ■ Double Sub Zero Fridge ■ Oversized European Standard Cherry Wood Doors & Stain Glass ■ Miele Double Oven ■ Miele Dishwasher ■ Miele Smooth Top Cooking Range ■ Custom Cabinetry ■ Centre Island w/Ceramic Sink ■ Double Door to Dining Room(Carved Cherry)
<p>Dining Room</p>	<p>21' 6" x 12'</p>	<ul style="list-style-type: none"> ■ Cherry Floor ■ 22 Pot Lights ■ Bay Window/Doors to Patio (100 sq.metres) ■ Overlooking Pond and Gazebo ■ Medallion Chandelier Base ■ Coffered Ceiling ■ Crown Mouldings
<p>Living/Family Room</p>	<p>21' x 13' 4"</p>	<ul style="list-style-type: none"> ■ Wall-to-wall Carpet ■ 11 Pot Lights ■ Polished Granite Mantel ■ Crown Mouldings ■ Zero Clearance Napoleon Fireplace ■ Bay Window/Doors to Patio (100 sq.metres) ■ 2x Half Crescent Windows ■ Double Oversized European Standard Cherry Wood Doors & Stain Glass to Hallway



CHRISTIE'S

GREAT ESTATES

Hallway		<ul style="list-style-type: none"> ■ Polished Granite Tile Floors w/Carpet Runners ■ 2 x Broom Closets ■ 1 x Closet ■ 2 pc ■ 4 pc
Guest Bathroom No. 1 Guest Bathroom No. 2		
Great Room	19' 10" x 24'	<ul style="list-style-type: none"> ■ 15' 4" Ceilings ■ 26 Pot Lights ■ Glass Block Walls ■ Double Doors to Wooden Deck overlooking Pond ■ Chandelier ■ "Floating" two-sided fireplace with polished granite mantel ■ Wall-to-wall carpet w/polished granite surround ■ Cherry Railings/Floors ■ Walk-through to Pool Room ■ Wet Bar w/Marble Counter ■ Built-in Cabinet ■ 2x Stain Glass Windows
Atelier/Library/Loff		
Pool Room	32' 6" x 38' 3"	<ul style="list-style-type: none"> ■ 24' 9" Ceilings ■ Wrap Around Solarium ■ 6 Jets Whirlpool ■ 2 Walk-outs to Deck and Pond ■ Ceramic Tile Floors ■ Shower Room w/Bench and Racks ■ Drinking Fountain ■ Ceramic Tile Floors ■ 2 Raw Cedar Sauna ■ 2 Piece Bathroom (Cedar)
Bedroom No. 4	12' x 19'	<ul style="list-style-type: none"> ■ Overlooking Pond ■ Ceiling with Medallion Centre ■ Wall-to-wall Carpet ■ 2x Built-in Closet ■ 5 Piece
Ensuite Bathroom		
Laundry Room	10' 4" x 10' 4"	<ul style="list-style-type: none"> ■ Ceramic Tile Floor ■ Built-in Shelves ■ Shoot ■ Oversize Stainless Miele Stacked Dryer/Washer
Mechanical Room		
2x Storage Rooms		
Upper Level		
Landing		<ul style="list-style-type: none"> ■ Cherry Wood Floors ■ Stucco Ceiling ■ Italian Glass Chandelier
Library: Hers	22' 0" x 18' 8"	<ul style="list-style-type: none"> ■ Irregular ■ Stucco Ceiling ■ 9x Potted Lights ■ Crown Mouldings ■ Polished Granite Border with Carpet Centre ■ Double Sided Fireplace (Opens to "Floating" Fireplace in Great Room) ■ Walk-out to Deck ■ Built-in Shelves ■ Double Oversized European Standard Cherry Wood Doors & Stain Glass ■ Opens out to Second Level "Loft" in Great Room



CHRISTIE'S
GREAT ESTATES

Bathroom	8.2' x 3.6'	<ul style="list-style-type: none"> ■ 2 Piece ■ Marble Floor ■ Cherry Door
Master Bedroom	22' 9" x 22' 2"	<ul style="list-style-type: none"> ■ Wall-to-Wall Carpet ■ Pot Lights ■ Walk-out to Wooden Deck ■ Bay Window ■ Built-in Four Poster Bed ■ "Lalique" Whirlpool Bath with Hand Shower and Marble StepUps ■ His/Hers Closets <ul style="list-style-type: none"> - Painted Doors His: Built-in Safe Built-in Racks Hers: Body Mirror Walk-through Built-in Shelves
Ensuite		<ul style="list-style-type: none"> ■ 4 piece with Shower <ul style="list-style-type: none"> - 6 Body Jets - 1 Massage Shower - 2 Benches ■ Marble Floor ■ Marble Wainscoting ■ His/Hers Marble Counters ■ 2x Built in Cabinets His/Hers ■ 2x Built in 3 Panel Mirror ■ His/Hers Bidet ■ Handshower
Bathroom		<ul style="list-style-type: none"> ■ Window overlooking Front Gardens ■ Ceramic Tile Floors ■ 2 Pot Lights
Library - His	17' 7" x 14' 1"	<ul style="list-style-type: none"> ■ Wall-to-Wall Carpet ■ Panel and Built-in Shelves ■ Walk-out to Wooden Deck ■ Italian Glass Chandelier ■ Built-in Four Poster Bed ■ Cherry Cabinet
Bedroom No. 2	12' 9" x 13' 3"	<ul style="list-style-type: none"> ■ Wall Paper ■ Stucco Ceiling with Medallion Centre ■ Crown Moulding ■ Wall-to-wall Carpet ■ Double Door Built-in Closet
Bedroom No. 3	12' 9" x 13' 3"	<ul style="list-style-type: none"> ■ Wall Paper ■ Stucco Ceiling with Medallion Centre ■ Crown Moulding ■ Wall-to-wall Carpet ■ Double Door Built-in Closet
Stairs		<ul style="list-style-type: none"> ■ Side Exit To Garage and Guest Wing ■ Polished Granite Landing with Built in Mud Pad

Guest Wing		
Living Room Storage Room Kitchen	29' 6" x 20' 9"	<ul style="list-style-type: none"> ■ Wall-to-wall Carpet ■ 11 Pot Lights ■ Window with Half Crescent Top ■ Cable ■ Satellite ■ Central Vacuum ■ Ceramic Floor ■ Built-in Cabinet ■ Hot Point Fridge ■ Hot Point Range ■ Kitchenaid Built-in Dishwasher ■ Ceramic Sink
Bedroom No. 5	14' 5" x 12' 3"	<ul style="list-style-type: none"> ■ Wall-to-wall Carpet ■ Window ■ Huge Walk-in Closet
Bathroom		<ul style="list-style-type: none"> ■ Whirlpool Washer/Dryer ■ Whirlpool Bath ■ Ceramic Floors ■ 4 Piece

All information and statements contained here, provided by **HARVEY KALLES REAL ESTATE LTD.** regarding property for sale, rental or financing is from sources deemed reliable and assumed correct, but no warranty or representation is made as to the accuracy thereof and same as is submitted subject to errors, omissions, changes in price, rental or other conditions, prior sale or withdrawal without notice.

Member of the Toronto Real Estate Board











\$2.88 Million Canadian/ ~ U.S. \$2.3 Million

Richard K.C. Ling

Associate Broker Vice-President

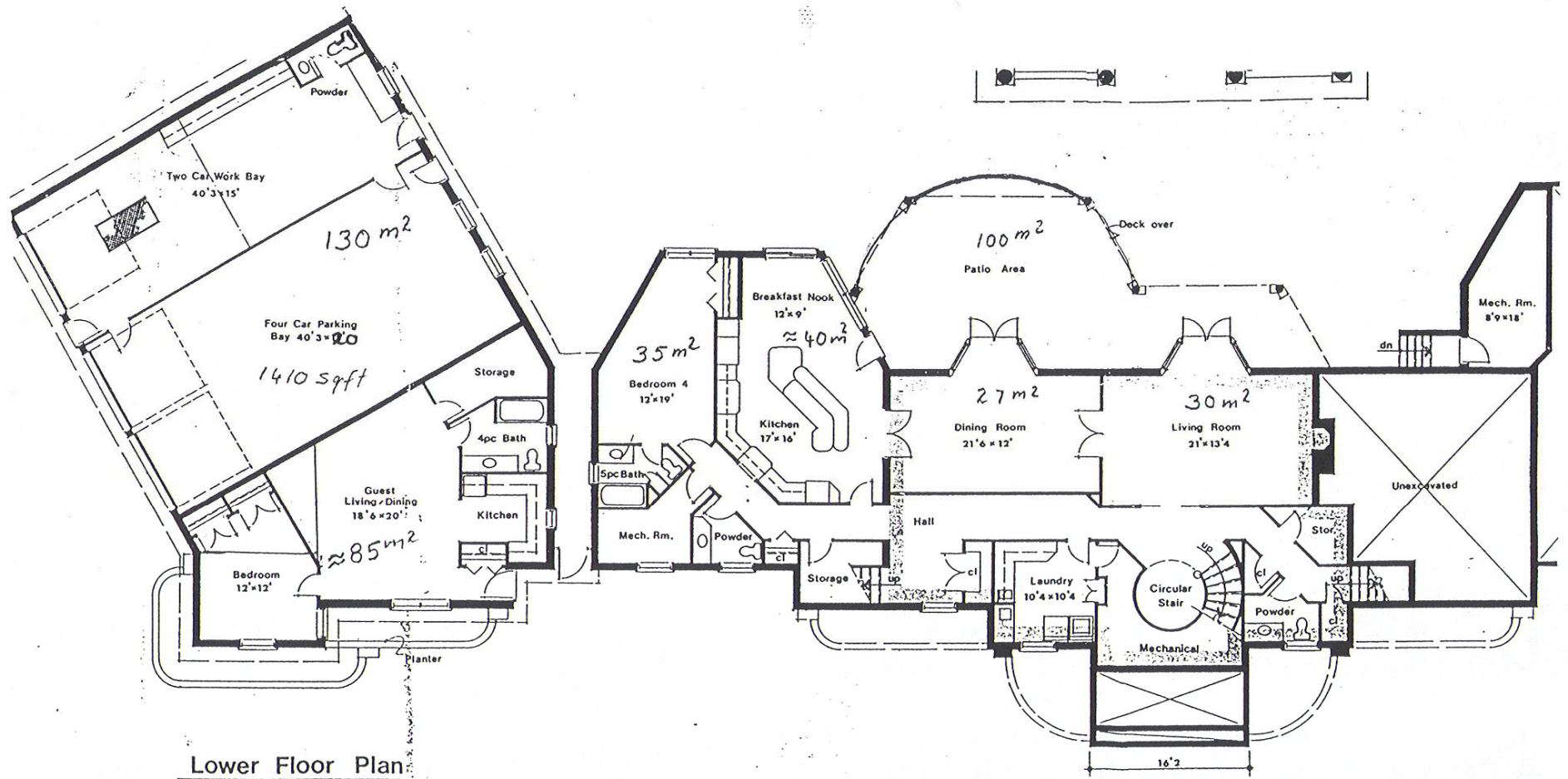
B.A., Economics, U.C.L.A.

416.809.0909(TO)/888.232.2088(North America)

www.GreatCanadianCountryEstates.com/TeutonicSplendourandWaterPhantasie-Ganaraska.htm

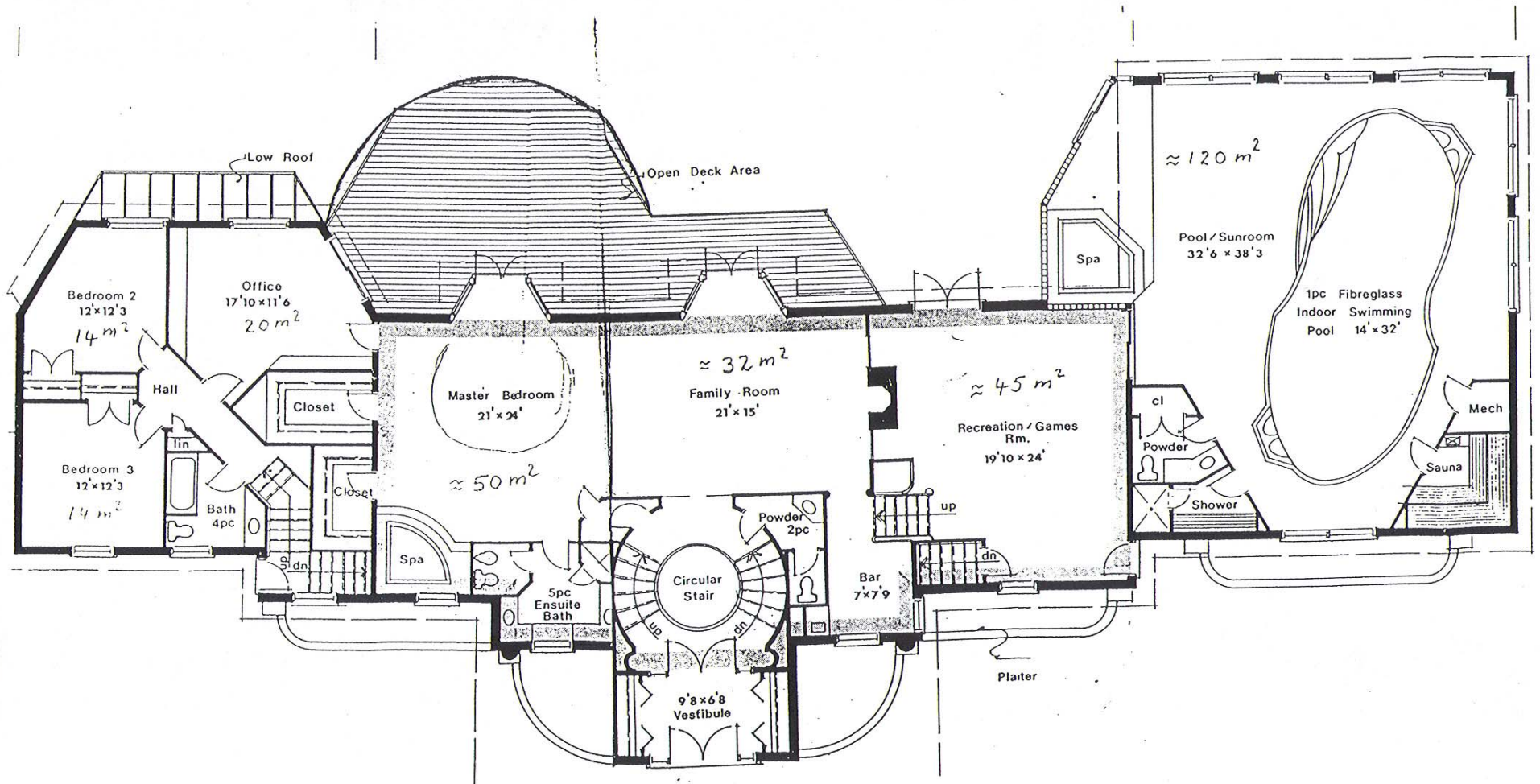

CHRISTIE'S

GREAT ESTATES



Lower Floor Plan

GREAT ESTATES



GREAT ESTATES

Guest Quarters





416.809.0909 / 888.232.2088

Richard K.C. Ling
Associate Broker, Vice-President
B.A., Economics U.C.L.A.
Harvey Kalles Real Estate Limited

Bio

⊕ Results Oriented

⊕ Three Generations in International Real Estate syndicating projects up to \$400 million and covering

⊕ Pacific Rim ⊕ United States of America ⊕ Canada

⊕ Accomplished Marketing Consultant in different sectors

⊕ Conceptual Development ⊕ Packaging

⊕ Diverse Business Experience

⊕ Real Estate Marketing & Sales ⊕ Senior Corporate and Private Banker,
Canadian Imperial Bank of Commerce Lloyds Bank Canada ⊕ International Shipping Public Relations

⊕ International Work Experience covering Europe Africa Pacific Rim U.S.A. Canada

⊕ International Established Network of Key and Wealthy Individuals ⊕ Member of i)
Toronto's CondoNet ii) Advisory Council to www.UniqueGlobalEstates.com & iii) Directory of Luxury
FIABCI Specialists

Other Interests and Accomplishments

⊕ Member of the National Commercial Council of the Canadian Real Estate Association

⊕ 6 Years in the "Out of the Cold" programme
(A local homeless initiative)

⊕ Mount Sinai Foundation Community Project

Co-Chair Corporate Sponsorship for the Chinese Silver Jubilee Gala 1998
Pacific Bridge Roaring Twenties in Shanghai Gala 2000

⊕ Member of the Board of Governors & Leadership Sinai, Mount Sinai Hospital

● 1999, 2000, 2001, 2002, 2003, 2004, 2005, 2006 ●

⊕ Marketing Director for Margin Films, Canada

Successfully launched the North America Premiere of entrant in the Toronto International Film Festival 1997

⊕ Enjoy mountaineering, hiking and rollerblading – both in participating or leading

Multilingual: English and Chinese (Cantonese & Mandarin)

GreatCanadianCountryEstates.com TheLingRegistry.com RichardKCLing.com GCCE-ICI.com

The Most Featured Portfolio in the Press (Globe and Mail, National Post)